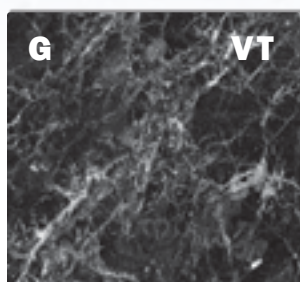


Colour range

multiPANEL the luxury alternative to tiling



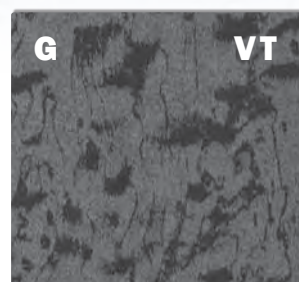
Moonstone 7171



Midnight Stone 0379



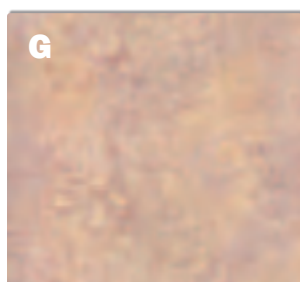
Veneto 410HG



Black Ice 042



Red Pearl 1911



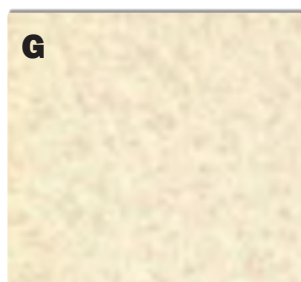
Pink Ice PP5104



Sandstone 7184



Travertine 3526



Natural India 194H



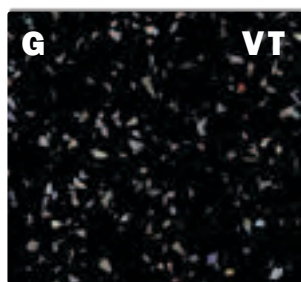
Grey Marble 139H



Classic Marble 141H



Zephyr 460H



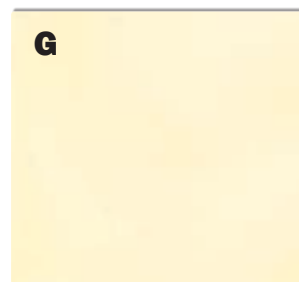
Twilight 033



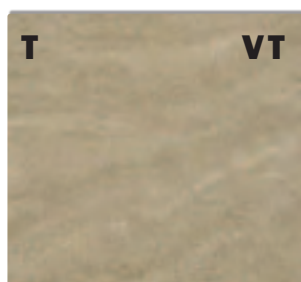
Blizzard 030



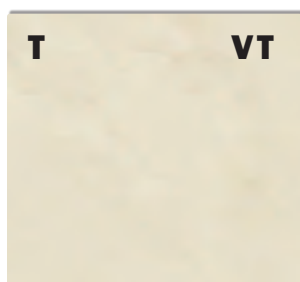
Black 80HG



Winter White 851H



Kalahari 372



Riven Marble 9241



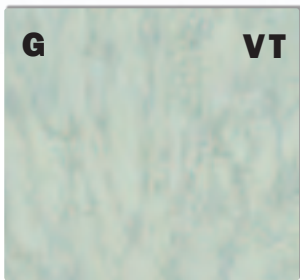
Riven Slate 2859



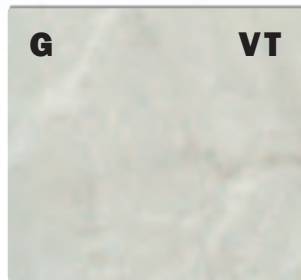
Urban Stone 047

Hydro-lock

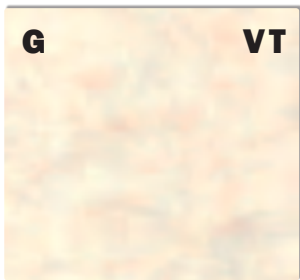
G - Gloss Finish **T** - Textured **VT** - available as vanity tops



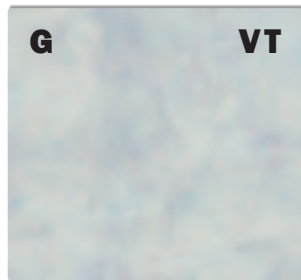
Glacier PP5703



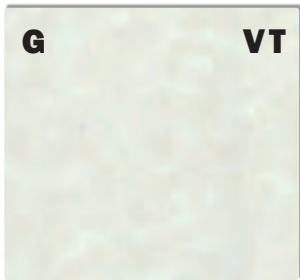
Limestone 7182



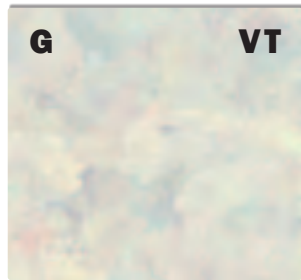
Beige Eiger PP5080



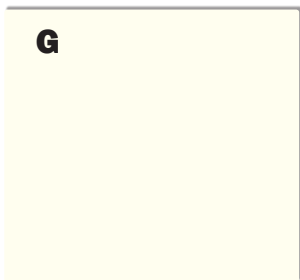
Blue Eiger PP5081



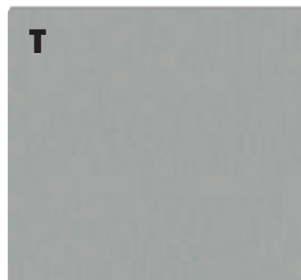
Frost White 049



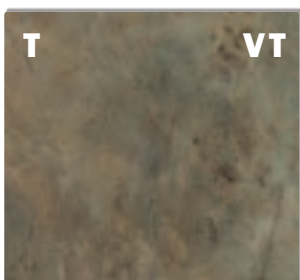
Sezanne Pearl 369H



White 85H



Aluminium Laminate 328

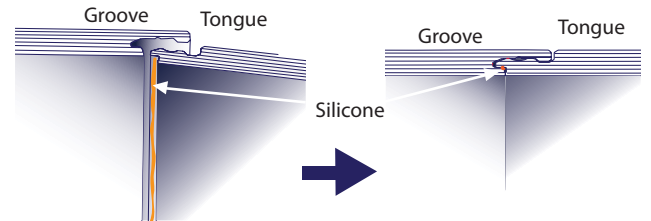


Manganite 5938



Patina Bronze 0794

To join two panels together without a Type D mid-joint, **multiPANEL** can be manufactured with our precisely engineered hydro-lock edge detail to create an extremely tight, almost invisible joint



Technical Information

- When manufacturing hydro-lock joints, 18.5mm is lost from the original panel width, e.g.
 $2400 \times 598 \text{mm} = 2400 \times 579.5 \text{mm}$ finished face size
 $2400 \times 1200 \text{mm} = 2400 \times 1181.5 \text{mm}$ finished face size
- Hydro-lock panels are supplied as standard with a tongued edge and a grooved edge
- Hydro-lock panels should be conditioned at normal room temperature for 48-72 hours prior to installation, particularly during cold spells.
- Panels should be fitted 'grooved' edge first, and the 'tongued' edge of the next panel angled in and pushed back until it snaps into place.
- A narrow bead of silicone sealant must be applied to the shoulder of the 'tongue'
- Accuracy of pattern alignment between panels may vary depending on the scale of the pattern
- Full fitting instructions should be read prior to installation.

Profiles

| | Black | White | Satin Anodised Silver | Bright Polished Silver |
|---------------------|-------|-------|-----------------------|------------------------|
| multiPANEL | ✓ | ✓ | ✓* | ✓ |
| tilePANEL | ✓ | ✓ | ✓ | ✓ |
| ceilingPANEL | | ✓ | | ✓*** |
| cleanPANEL | ✓ | ✓ | | |

* Type X profile is only available in satin anodised silver

** Type P profile is only available in bright polished silver

*** Type M profile (silver) is supplied with two narrow silver strips above and below the white cove profile