

MULTIPANEL™

WALLS

CLASSIC RANGE

PLUS RANGE

CREATE RANGE - PHOTO WALL

The following is an installation guide for fitting Multipanel™ CLASSIC RANGE, PLUS RANGE, CREATE RANGE - PHOTO WALL

Recommended Tools

- Jig saw or Hand saw ■
- Measuring Tape ■
- Ruler ■
- Pencil ■
- High-grab adhesive ■
- Silicone Sealant ■
- Masking Tape ■
- Drill & Screwdriver ■

Pre-installation check-list

- ✓ Inspect panels for any flaws, defects or damage*
- ✓ Check colour and sheen levels match between all panels.
- ✓ Check colour and sheen levels match between all profiles.
- ✓ If panels are being fitted by a tradesman, colours should be approved by end user.
- ✓ Condition panels at room temperature for 48 hours, if they have been subject to extremely cold conditions.
- ✓ Read installation guidelines.

**Panels are supplied with clear protective polycoating to the face, and white to the rear. The clear polycoating should be carefully peeled back to inspect the surface, and replaced for installation. The white polycoating should be removed for installation. This is particularly important where polycoating has text over-printed. Once installation has commenced, the panels are deemed to have arrived in perfect condition – any of the above reported after installation will not be covered by your warranty.*

1. Conditioning and Storage

Prior to installation, it is strongly recommended that panels are conditioned in the room (or similar environment) where they will be installed for 48-72 hours. This is particularly important when fitting hydro-lock panels, as extremely cold conditions can affect the precision of the joint.

Panels should not be stored in areas of high humidity, and should never be stored outside. Multipanel™ must always be stored flat and horizontal to prevent bowing, and must not be rested at an angle against walls, or between supporting structures, e.g. tressels

Multipanel™ High Grab Panel Adhesive should always be stored in cool dry conditions between 5-25°C. If Adhesive has been subject to extremes of temperature, it should be conditioned at normal room temperature for 48-72 hours

2. Wall Preparation

- a. Panels can be fixed to most surfaces including tiles, concrete, plaster, plasterboard, and chipboard/plywood walls providing they are sound. Alternatively softwood grounds can be applied over poor surfaces, set at 60cm vertically and 80 cm horizontally (see fig. A), or as close to these settings as is appropriate for the job – it's better to have an additional ground than too few.
- b. To ensure your Multipanel™ is properly bonded, ensure all surfaces to which adhesive will be applied are clean and dry.

3. Handling and cutting panels

- a. Multipanel™ has very sharp corners and edges – gloves should be worn at all times when carrying, handling and fitting panels. Appropriate PPE such as safety eyewear should be worn when cutting panels.
- b. Measure and mark your required cutting line, ensuring grout lines match prior to cutting and installation.
- c. When using a jig-saw with upward cutting jig-saw blade (see fig. B) or a circular saw, panels should be cut from the back, decorative face down to prevent chipping of the laminate surface
- d. When using a fine-tooth blade hand-saw, panels should be cut decorative face up (see fig. C).
- e. When measuring distance from walls, or passed shower enclosures, allowances should be made for the thickness of aluminium profiles and the space between walls and profiles. Sizes are shown on the next page.

figure A.

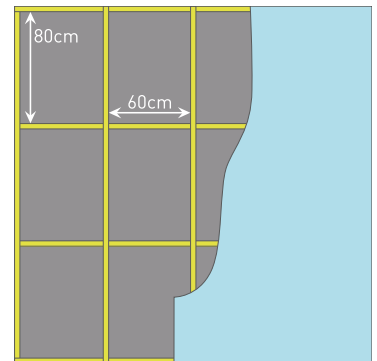


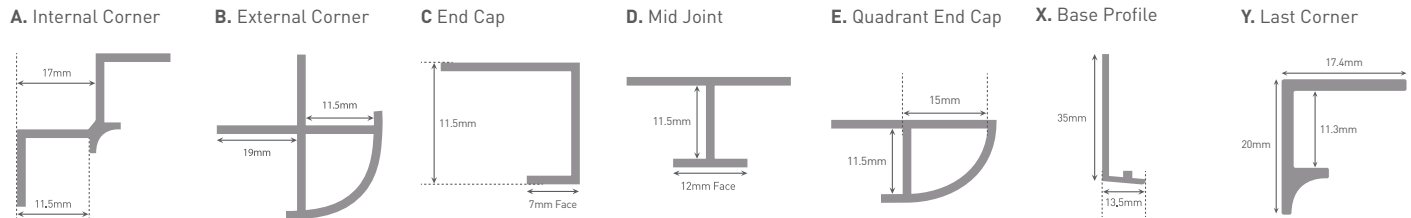
figure B.



figure C.



Metal Section Range (supplied in 2.45m lengths)



4. Fixing panels and profiles

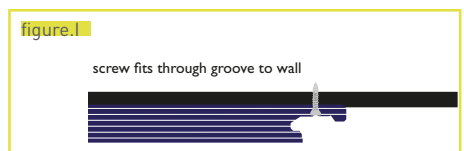
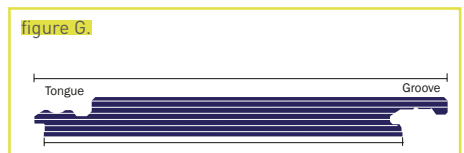
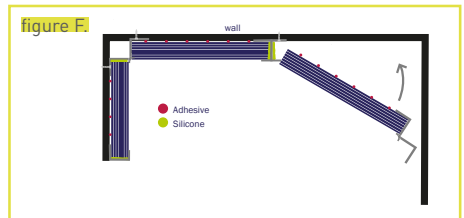
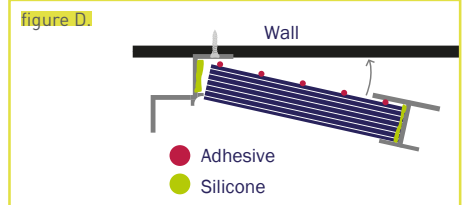
All panels must be properly sealed at all vertical edges, whether they are being attached to profiles, shower enclosures or hydro-locked. Panels must also ALWAYS be silicone sealed at the base, whether using Multipanel™ seal kit, with or without extrusions. Inadequate sealing will invalidate your warranty. If the seal starts to deteriorate, it must be re-sealed immediately, and not allow moisture to penetrate joints or junctions.

- The first profile – normally start with a Type A Internal Corner or Type C/Type E End Cap – should be fixed to the wall or end grounds with countersunk screws, or adhesive and a bead of silicone sealant applied to the channel (*see fig. D*).
- Apply silicone sealant to the channel of the second profile and attach it to the long edge of first Multipanel™
- Apply high grab adhesive to the reverse of the Multipanel™ (*see fig. E*), angle into the first profile and push firmly against the wall (*see fig. D*).
- Continue the above steps to work around corners, finishing with end caps if required (*see fig. F*).

5. Fixing hydro-lock panels

Prior to installation, it is strongly recommended that hydro-lock panels are conditioned in the room (*or similar environment*) where they will be installed for 48-72 hours. This is particularly important in cold conditions. Hydro-lock tongue and groove panels should be dry jointed prior to final installation to ensure a sufficiently flush and tight joint will be achieved between all panels. Hydro-lock panels **MUST** be silicone sealed at all vertical joints, as well as at all extrusions, joints and at the bottom of the panel.

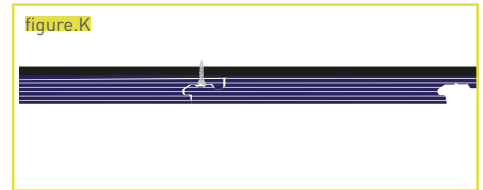
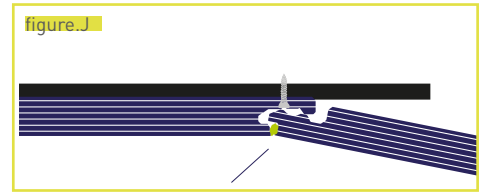
- Hydro-lock panels can be screw-fixed or bonded to the wall with high-grab adhesive. Screws should be at 400 – 600mm centres with the bottom screw a maximum of 35mm from the bottom edge of the panel.
- When manufacturing hydro-lock joints, 18.5mm is lost from the original panel width – please allow for this when calculating panel requirements, e.g.
 - 2400x598mm = 2400x579.5mm finished face size. (*see fig. G*)
 - 2400x1200mm = 2400x1181.5mm finished face size.
- Hydro-lock panels are supplied as standard with a tongued long edge and a grooved long edge. When fitting panels into an extrusion, the protruding tongued or grooved edge should be cut off (*see fig. H*).
- Bond the first panel to the wall or frame, with the grooved edge first (*see fig. I*). If screw fixing panels to the wall/frame, pilot bore the recess in the groove where screws are to be located. (failure to pilot bore may result in the panels splitting). Pack between back of panel and wall as necessary to avoid distortion to the Hydro-lock joint when screw fixing. Fix through the back flange of the grooved edge with countersunk screws - the screw head should fit into the recess on the back of the tongue (*see Fig. J*). Ensure that screws are turned until they are just under the flush to prevent any obstruction to the tongue of the next panel to be fitted.



MULTIPANEL™ WALLS

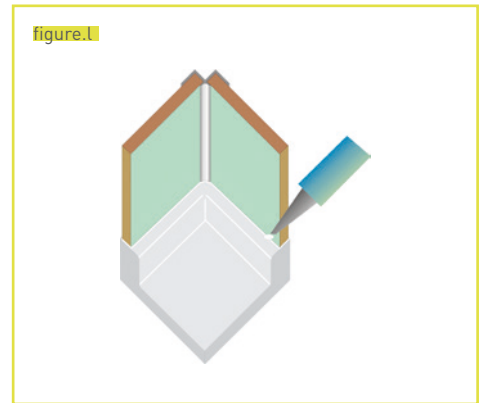


- e. Apply masking tape to the two meeting edges of the decorative face to protect the laminate face. Apply a narrow bead (2-3mm) of silicone sealant to the front shoulder of the tongue (see Fig. J).
- Note.** Using too much silicone sealant will affect the tightness of the Hydro-lock joint. Using too little may affect water-tightness.
- f. Starting at approximately 45°, angle the tongue of the next panel into the groove of the fixed panel. Ensure the tongue is fully inserted into the groove before snapping it back to the wall, (see Fig. K) otherwise it may damage the joint.
- g. Remove the masking tape and ensure any excess silicone sealant is wiped from the laminate face immediately.



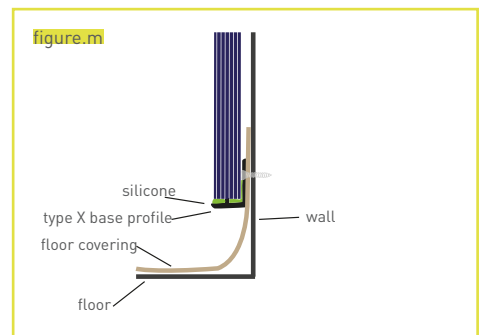
6. Shower trays and baths

- a. Multipanel™ Seal is an all-in-one kit for sealing the bottom edge of Multipanel™ at a shower tray or bath. See separate installation guide.
- b. Alternatively you can fit Multipanel™ with a 3mm gap between the edge of the panel and the shower tray or baths, sealing the gap with silicone sealant. (see fig L.)



7. Wet areas

In wet areas, we recommend the use of an aluminium Type X base profile. Height adjustments should be made where the panel meets the ceiling. Floor covering material should continue approx. 100 mm up the wall behind the panels. Screw fix the profile Through the floor covering into the wall/frame, and apply silicone sealant to the base and the back of the profile (see fig. M)



8. Window detail

At windowsills, a Type E quadrant end cap should be used between panels, and mitred in the corners as shown below. (see fig. N)

9. Fitting valves and controls

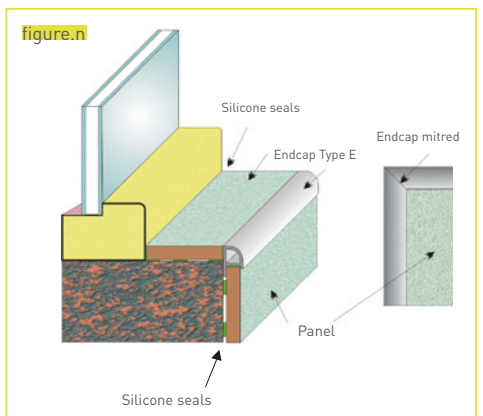
When cutting apertures or drilling into Multipanel™, a 2mm clearance gap should be left around all edges, and sealed with silicone sealant.

10. Adhesives and Sealants

Multipanel™ Panel adhesive and sealant are available to order from your distributor or local show room.

11. Aftercare

Once installed, your Multipanel™ requires minimal maintenance. Multipanel™ should be cleaned with warm water and a non-abrasive mild detergent. Scouring products or similar products should not be used, and doing so may invalidate your warranty.

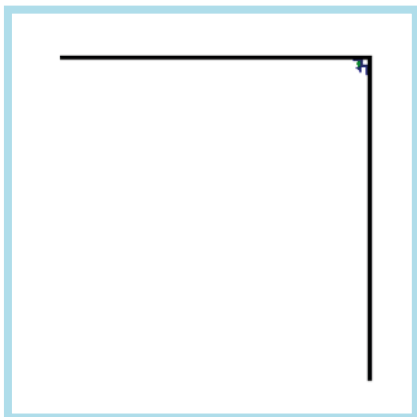




12. **Standard installations**

Corner Installation Detail

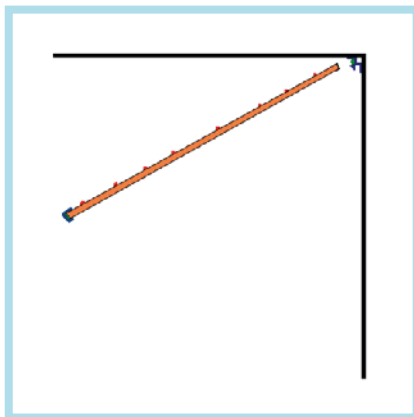
1.



Fit Internal Corner in corner (either glued or screw fixed).

Fill one side of Type A internal corner with bead of silicone ready for panel.

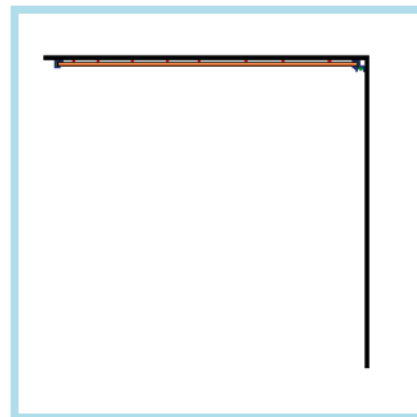
2.



Spread high grab adhesive on back of panel.

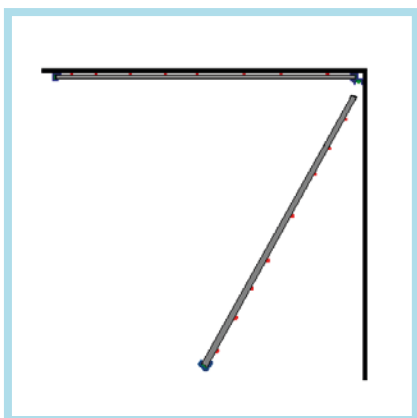
Fit end cap on panel with silicone cleaning excess of decorative face side.

3.



Push panel into internal corner and press against wall firmly, clean any excess silicone from corner.

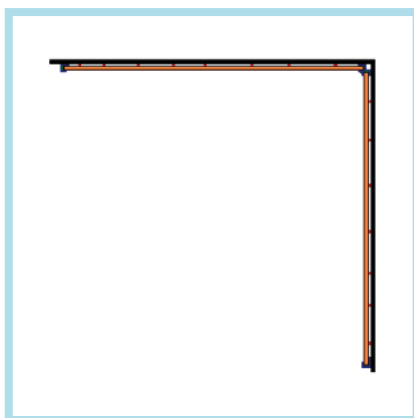
4.



Fill other side of internal corner with silicone ready panel.

Repeat steps 2 & 3

5.



Panels now ready for shower cubicle to be fitted if required.

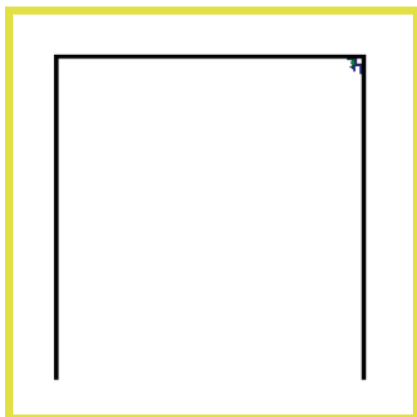
Please fix through panel into wall behind for secure fixing.

MULTIPANELTM WALLS



Recess Installation Detail

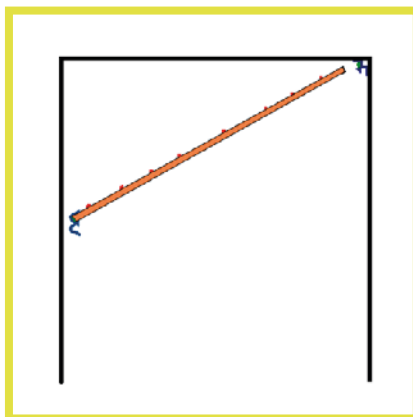
1.



Fit Internal Corner in corner (either glued or screw fixed).

Fill one side of Internal Corner with bead of silicone ready for panel.

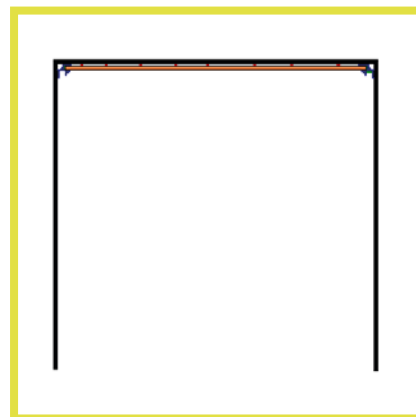
2.



Spread high grab adhesive on back of panel.

Fit Internal Corner on panel with silicone cleaning excess of decorative face side.

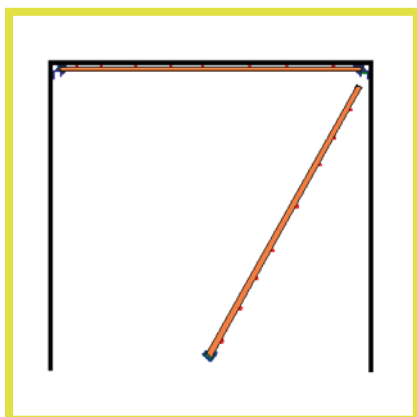
3.



Push panel into Internal Corner and press against wall firmly, clean any excess silicone from corner.

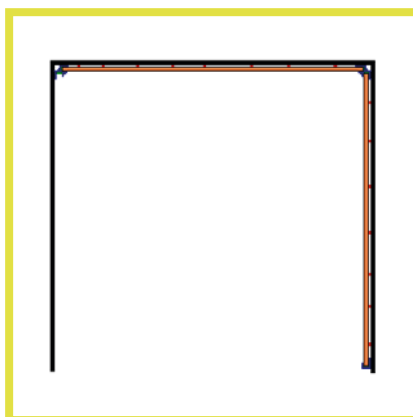
Fill other side of Internal Corner with silicone ready panel.

4.

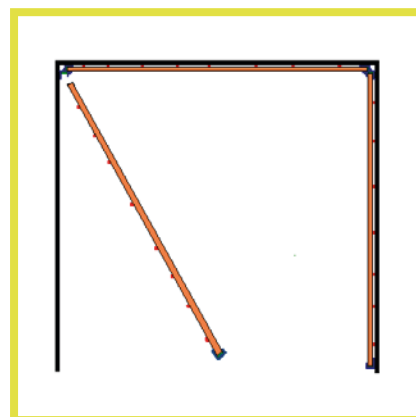


Repeat steps 2 & 3, fitting an end cap if required.

5.

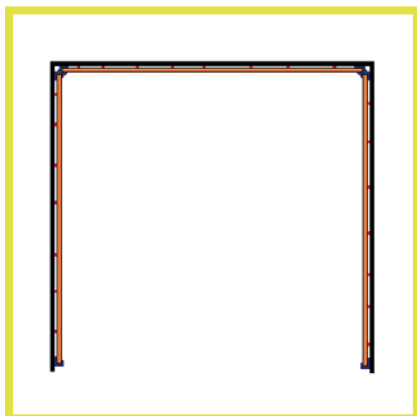


6.



Again repeat steps 2 & 3, fitting an end cap if required.

7.



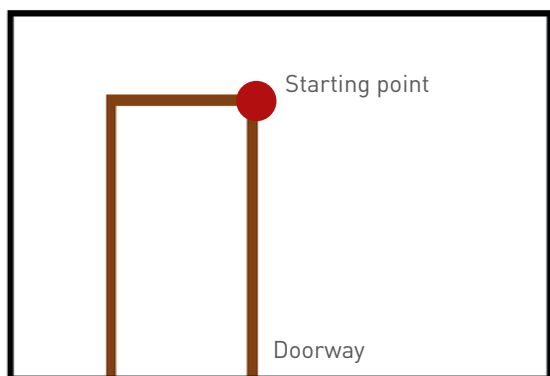
Panels now ready for cubicle door to be fitted if required.

Please fix through panel into wall behind for secure fixing.

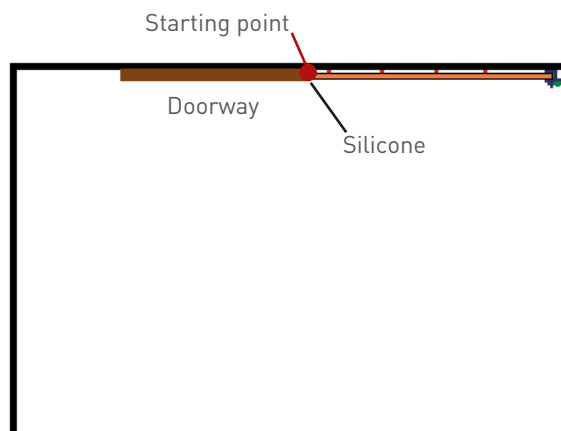
MULTIPANELTM WALLS



Full Room Installation Detail



1. Starting at the side of the doorway working clockwise away from the doorway.



2. Silicone to top of doorway only then continue round room.



3.



4.



5.

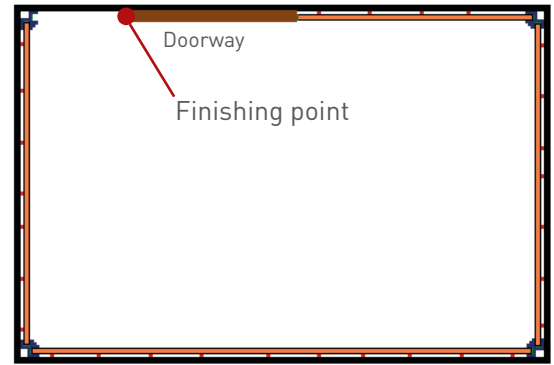


6.

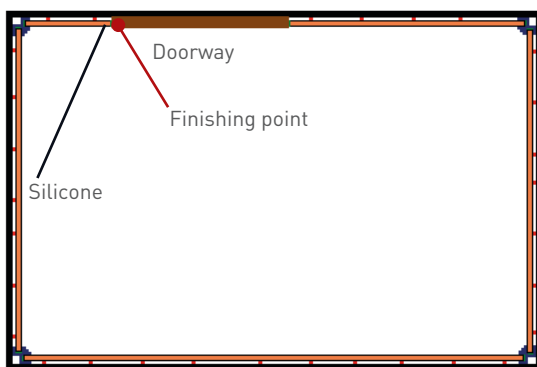
Full Room Installation Detail



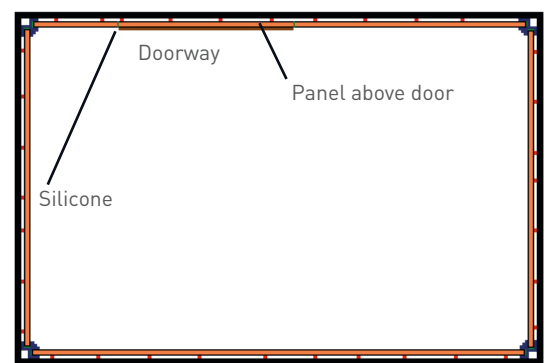
7.



8.



9. Silicone to top of doorway only, then cut panel for above door.



10. Panel above door should be cut accurately. Joints to panels either side should be siliconed.



MULTIPANELTM

Don't tile it. Multipanel it.

WATERPROOF | WALLS | FLOORS | CEILINGS | VANITIES

DOMESTIC WARRANTY

Grant Westfield Ltd offers a 10 year warranty that Multipanel™ panels will not crack, blister or delaminate and will remain watertight if fitted and sealed in accordance with our published recommendations.

In the event of a successful claim under your Multipanel™ guarantee we will replace the panels, but will only cover any claims for consequential costs under exceptional circumstances where a defective panel prohibits ordinary use of the surrounding area.

This guarantee does not cover failure of the product due to:

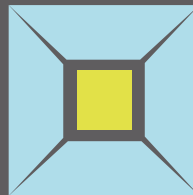
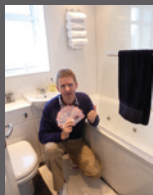
- Faulty installation
- Incorrect maintenance or storage - panels should not be leaned against walls, or balanced between tressels. If panels have been stored in extremely cold conditions, they should be conditioned at room temperature for 48 hours prior to installation.
- Damage or misuse

Prior to installation the following checks should be carried out and any queries reported, as claims of this nature will not be covered:

- Colour matching and sheen levels between all panels and profiles
- If panels are to be fitted by a tradesman - colours should 1st be approved by the customer
- All products have arrived in good condition
- Dry fit hydro-lock tongue and groove jointed boards prior to final installation to ensure a flush finish and ensure tightly butted joints
- Flaws or defects in laminate - although unlikely. Where protective poly coating has text over printed, this should be removed to check the laminate.

This guarantee does not confer any rights other than those set out above and claims for consequential loss or damage are excluded. This guarantee does not affect your statutory rights as a consumer.

Your Photos Competition



For a chance to win **£100** worth of **Marks & Spencer** vouchers upload photos of your new Multipanel™ product to our Your Photos gallery page on the website. www.multipanel.co.uk

Multipanel™, Westfield Avenue, Edinburgh, EH11 2QH

▶ **t** +44(0)131 290 2862

▶ **info@multipanel.co.uk**

▶ **f** +44(0)131 337 9241

▶ **www.multipanel.co.uk**



Multipanel™ is part of the Grant Westfield Group