

The following is an installation guide for fitting multiPANEL to walls, tiles, plaster, chipboard or concrete. A separate guide is available for fitting multiPANEL shower kits.

### Recommended Tools

- Jig saw or Hand saw
- Measuring Tape
- Ruler
- Pencil
- High-grab adhesive
- Silicone Sealant
- Masking Tape

**Panels & profiles MUST be checked for colour shading differences, flaws, defects or damage prior to installation.**

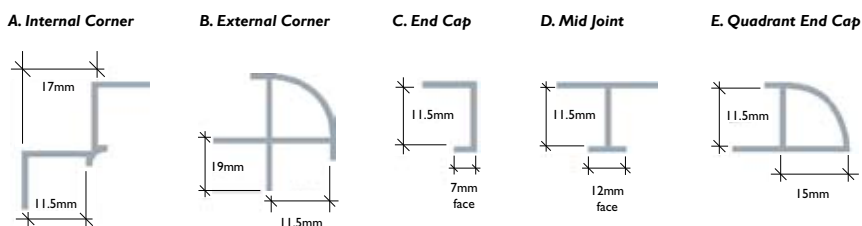
### 1. Wall Preparation

- Panels can be fixed to most surfaces including tiles, concrete, plaster and chipboard walls, provided they are sound. Alternatively softwood grounds can be applied over poor surfaces, set at 60cm vertically and 80cm (see figure A.) horizontally, or as close to these settings as is appropriate for the job.
- To ensure your multiPANEL is properly bonded, ensure all surfaces to which adhesive will be applied are clean and dry.

### 2. Cutting panels

- Ensure appropriate safety eyewear is worn when cutting multiPANEL.
- Measure and mark your required cutting line.
- When using a jig-saw (with upward cutting jig-saw blade), panels should be cut from the back, decorative face down to prevent chipping of the laminate surface (see figure B.).
- When using a circular saw or fine-tooth blade hand-saw, panels should be cut decorative face up, with the protective film removed from the cutting line only (see figure C.).
- When measuring distance from walls, or passed shower enclosures, allowances should be made for the thickness of aluminium profiles and the space between walls and profiles. Sizes are shown below:

#### Metal Section Range (supplied in 2.5m lengths)



### 3. Fixing panels and profiles

- The first profile – normally start with a Type A Internal Corner or Type C/Type E End Cap – should be fixed to the wall or end grounds with countersunk screws, and a bead of silicone sealant applied to the channel (see figure D.).
- Apply silicone sealant to the channel of the second profile (unless tongue and groove joints are being used) and attach to the first multiPANEL.
- Apply high grab adhesive to the reverse of the multiPANEL, angle into the first profile and push firmly against the wall (see figure E.).
- Continue the above steps, finishing with end caps if required (see figure F.).

figure A.

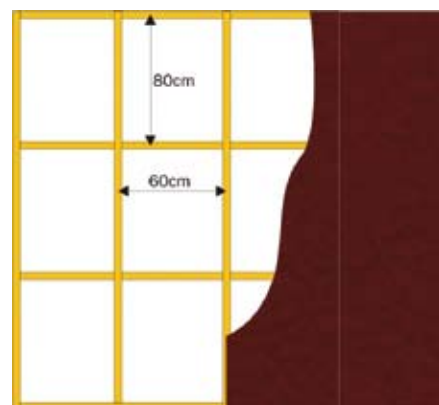


figure B.



figure C.



figure D.

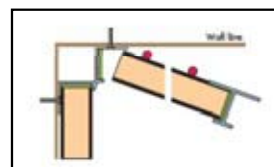
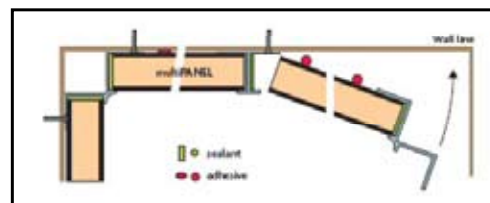


figure E.



figure F.



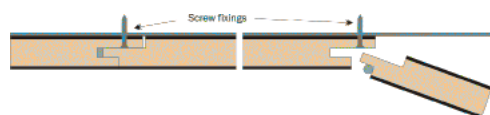
### 4. Fixing tongue and groove panels

Tongue and groove panels should be dry jointed prior to final installation to ensure a sufficiently flush and tight joint will be achieved between all panels.

If applying tongue and groove panels directly to the wall, please ensure the wall surface is flat and even.

- a) Tongue and groove panels should be fixed using screws as well as adhesive (*see figure G.*). Failure to screw fix the panels may invalidate warranty.
- b) Fix through the back flange of the grooved edge with No. 4 screws, ensuring screw heads do not obstruct the tongue of the next panel.
- c) Screws should be at 400 – 600mm centres with the bottom screw a maximum of 35mm from the bottom edge of the panel.
- d) Apply masking tape to the two meeting edges of the decorative face.
- e) Apply a bead of silicone sealant to the shoulder of the tongue, and slot the panels together. Clean off any excess sealant and remove masking tape.

figure G.



### 5. Standard installations

[Corner Installation \(CLICK HERE\)](#)

[Recess Installation \(CLICK HERE\)](#)

[Full Room Installation \(CLICK HERE\)](#)

## 6. Shower trays and baths

- multiPANELseal is an all-in-one kit for sealing the bottom edge of multiPANEL at a shower tray or bath. [See separate installation guide.](#)
- Alternatively you can fit multiPANEL with a 3mm gap between the edge of the panel and the shower tray or baths, sealing the gap with silicone sealant. (see figure H.)

## 7. Wet areas

- In wet areas, multiPANEL can be chamfered or set in a capping section, and sealed to the floor finish. (see figures i. & j.)

## 8. Window detail

- At windowsills, a Type E quadrant end cap should be used between panels, and mitred in the corners as shown below. (see figure K.)

## 9. Fitting valves and controls

- When cutting apertures through multiPANEL, a 2mm clearance gap should be left around all edges, and sealed with silicone sealant.

## 10. Adhesives and Sealants

- Appropriate adhesives and sealant are available from your distributor or local show room.

## 11. Aftercare

- Once installed, your multiPANEL requires minimal maintenance. multiPANEL should be cleaned with warm water and a non-abrasive mild detergent. Scouring products or similar products should not be used, and doing so may invalidate your warranty.

## CONTENTS

figure H.



figure i.

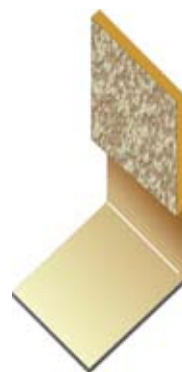
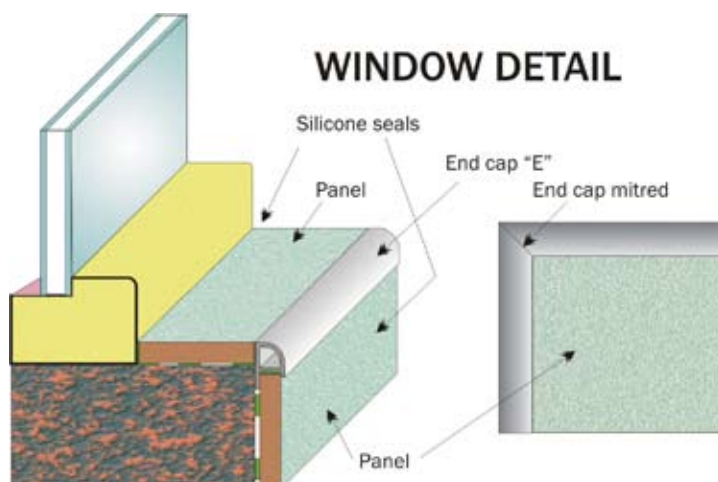


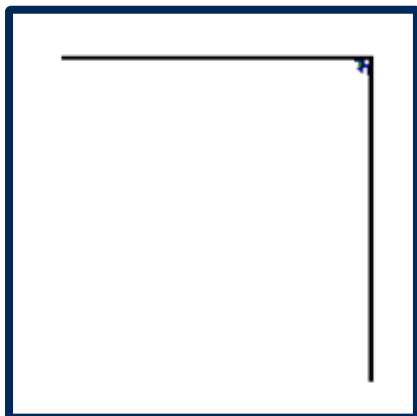
figure j.



figure K.



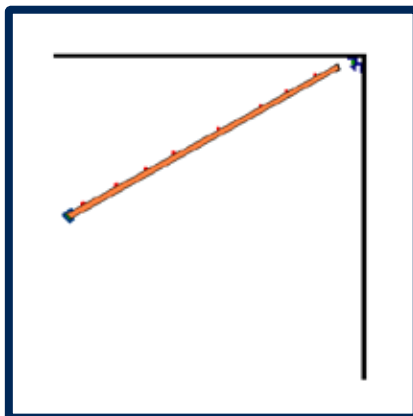
1.



Fit Internal Corner in corner (either glued or screw fixed).

Fill one side of Type A internal corner with bead of silicone ready for panel.

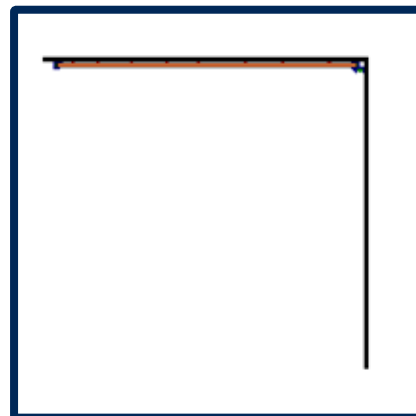
2.



Spread high grab adhesive on back of panel.

Fit end cap on panel with silicone cleaning excess of decorative face side.

3.



Push panel into internal corner and press against wall firmly, clean any excess silicone from corner.

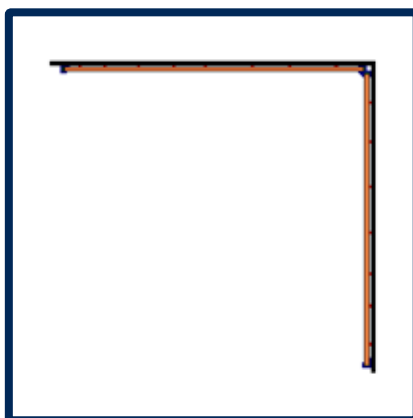
4.



Fill other side of internal corner with silicone ready panel.

Repeat steps 2 & 3

5.



Panels now ready for shower cubicle to be fitted if required.

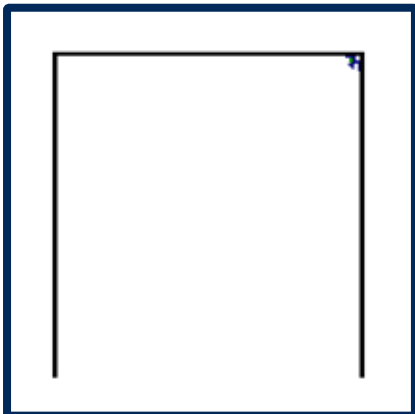
Please fix through panel into wall behind for secure fixing.

[back to multiPANEL](#)

[back to tilePANEL](#)

[back to cleanPANEL](#)

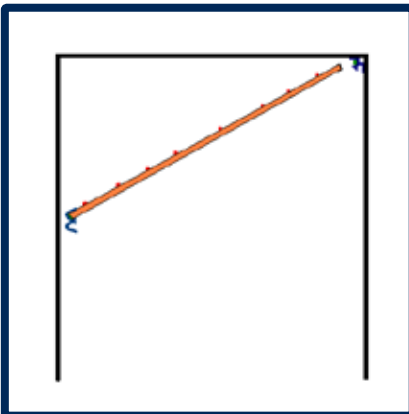
1.



Fit Internal Corner in corner (either glued or screw fixed).

Fill one side of Internal Corner with bead of silicone ready for panel.

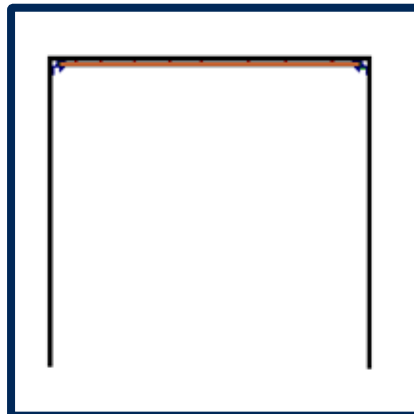
2.



Spread high grab adhesive on back of panel.

Fit Internal Corner on panel with silicone cleaning excess of decorative face side.

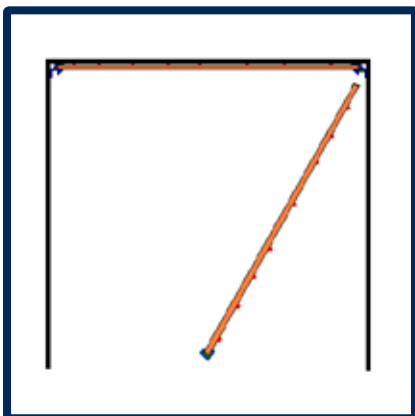
3.



Push panel into Internal Corner and press against wall firmly, clean any excess silicone from corner.

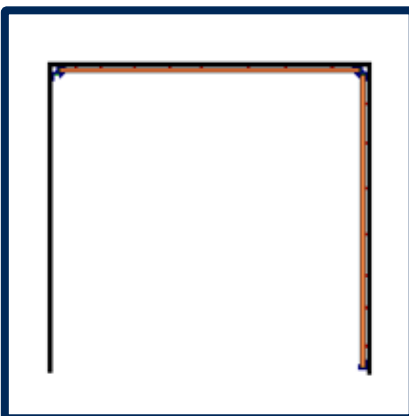
Fill other side of Internal Corner with silicone ready panel.

4.

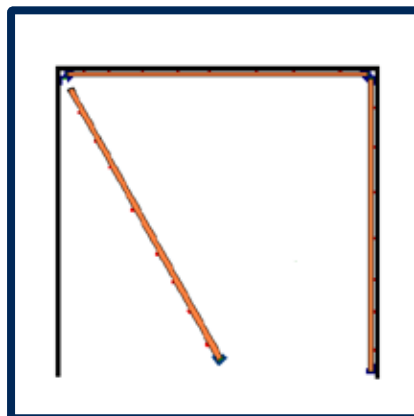


Repeat steps 2 & 3, fitting an end cap if required.

5.

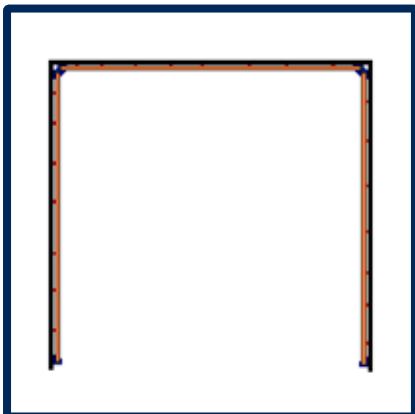


6.



Again repeat steps 2 & 3, fitting an end cap if required.

7.



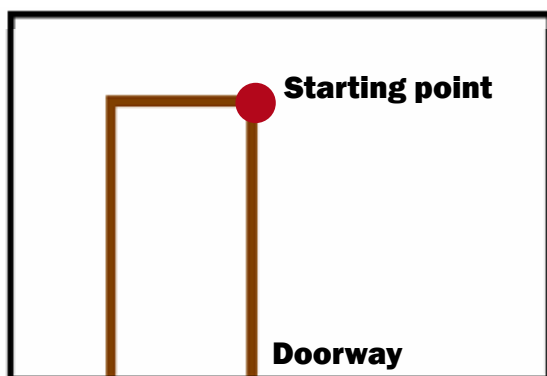
Panels now ready for cubicle door to be fitted if required.

Please fix through panel into wall behind for secure fixing.

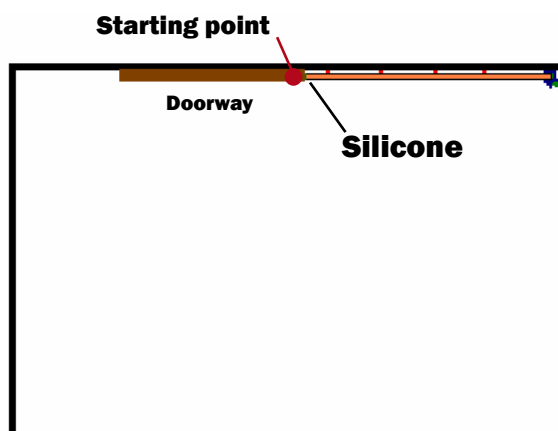
[back to multiPANEL](#)

[back to tilePANEL](#)

[back to cleanPANEL](#)



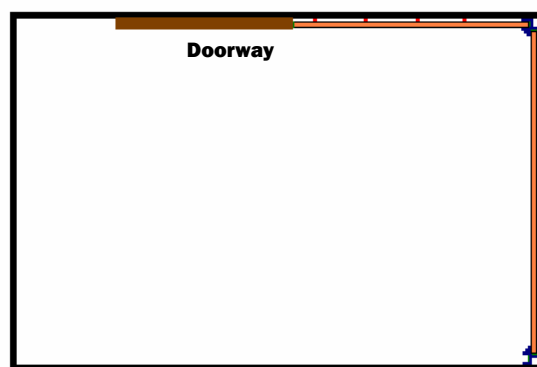
1. Starting at the side of the doorway working clockwise away from the doorway.



2. Silicone to top of doorway only then continue round room.



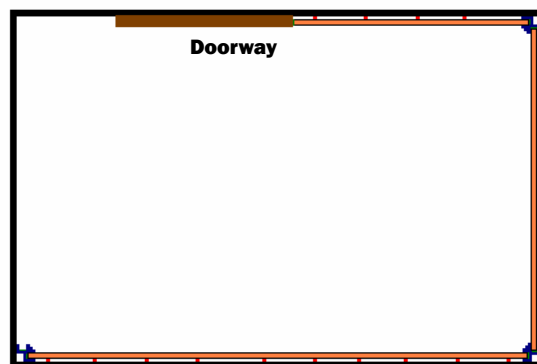
3.



4.



5.



6.

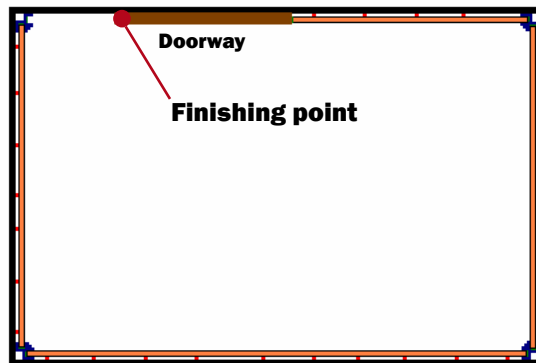
[back to multiPANEL](#)

[back to tilePANEL](#)

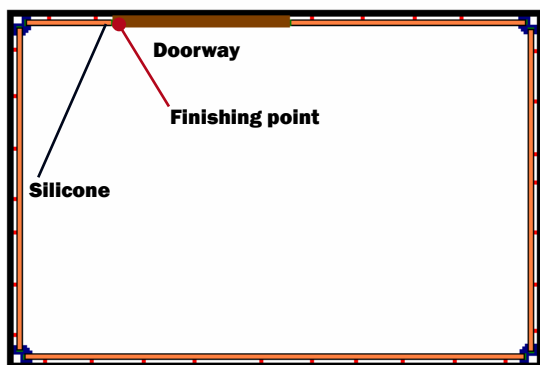
[back to cleanPANEL](#)



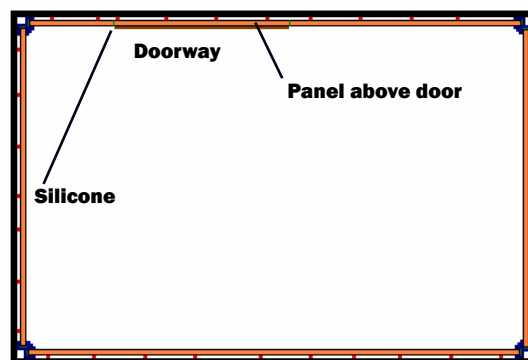
7.



8.



9. Silicone to top of doorway only, then cut panel for above door.



10. Panel above door should be cut accurately.  
Joints to panels either side should be siliconed.

[back to multiPANEL](#)

[back to tilePANEL](#)

[back to cleanPANEL](#)