

MULTIPANEL™

WALLS

TILE RANGE

Recommended Tools

- Jig saw or Hand saw
- Measuring Tape
- Ruler
- Pencil
- High-grab adhesive
- Silicone Sealant
- Masking Tape
- Drill & Screwdriver

Pre-installation check-list

- ✓ Inspect panels for any flaws, defects or damage*
- ✓ Check colour and sheen levels match between all panels.
- ✓ Check colour and sheen levels match between all profiles.
- ✓ If panels are being fitted by a tradesman, colours should be approved by end user.
- ✓ Ensure grout lines will align between panels by dry-jointing and trimming to suit.
- ✓ Remove polycoating from the decorative face that WILL NOT be used, when fitting Embossed Multipanel Tile.
- ✓ Condition panels at room temperature for 48 hours, if they have been subject to extremely cold conditions.
- ✓ Read installation guidelines.

**Panels are supplied with protective polycoating. This should be carefully peeled back to inspect the laminate surface, and replaced for installation. Once installation has commenced, the panels are deemed to have arrived in perfect condition – any of the above reported after installation will not be covered by your warranty.*

1. Conditioning and Storage

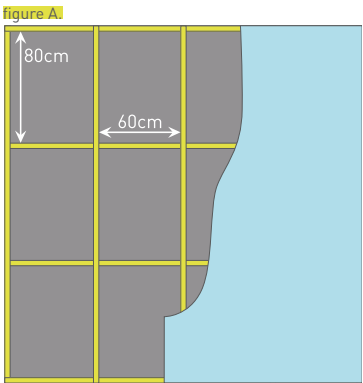
Prior to installation, it is strongly recommended that panels are conditioned in the room (or similar environment) where they will be installed for 48-72 hours. Panels should not be stored in areas of high humidity and should never be stored outside. Multipanel™ Tile must always be stored flat and horizontal to prevent bowing, and must not be rested at an angle against walls, or between supporting structures, e.g. tressels. Multipanel™ High Grab Panel Adhesive should always be stored in cool, extremes of temperature, it should be conditioned at normal room temperature for 48-72 hours.

2. Wall Preparation

- a. Panels can be fixed to most surfaces including tiles, concrete, plaster, plasterboard, and chipboard/plywood walls providing they are sound. Alternatively softwood grounds can be applied over poor surfaces, set at 60cm vertically and 80 cm horizontally (see fig. A), or as close to these settings as is appropriate for the job – it's better to have an additional ground than too few.
- b. To ensure your Multipanel™ Tile is properly bonded, ensure all surfaces to which adhesive will be applied are clean, dry and flat.

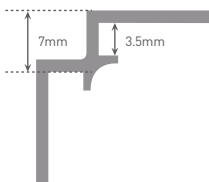
3. Handling and cutting panels

- a. Ensure appropriate PPE such as safety eyewear and gloves are worn when cutting Multipanel™ Tile
- b. Measure and mark your required cutting line, ensuring grout lines match prior to cutting and installation.
- c. Using a jig-saw with an upward cutting jig-saw blade, Multipanel™ Tile should be cut from the back, with your chosen decorative face down to prevent chipping of the laminate surface.
- d. Continue the above steps, finishing with end caps if required.
- e. When measuring distance from walls, or passed shower enclosures, allowances should be made for the thickness of aluminium profiles and the space between walls and profiles. Sizes are shown below:

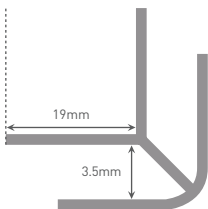


Metal Section Range (supplied in 2.45m lengths)

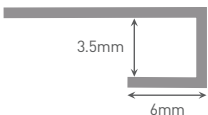
J. Internal Corner



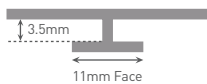
H. External Corner



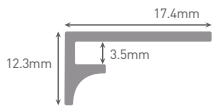
F. End Cap



G. Mid Joint



Y. Last Corner



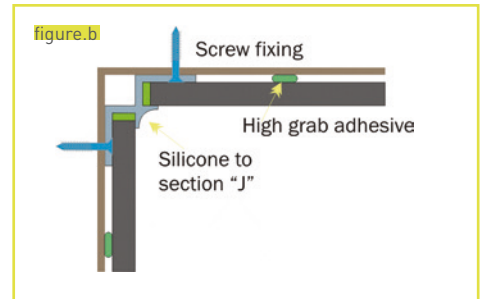
MULTIPANEL™ WALLS TILE RANGE



4. Fixing panels and profiles

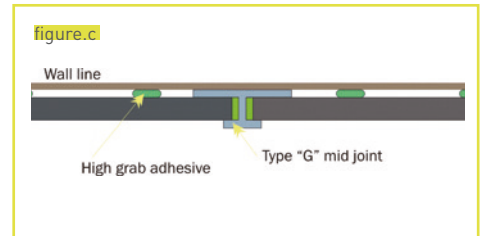
All panels must be properly sealed at all vertical edges, whether they are being attached to profiles, shower enclosures or hydro-locked. Panels must also **ALWAYS** be silicone sealed at the base, whether using Multipanel™ seal kit, with or without extrusions. Inadequate sealing will invalidate your warranty. If the seal starts to deteriorate, it must be re-sealed immediately, and not allow moisture to penetrate joints or junctions.

- The first profile – normally start with a Type J Internal Corner or Type F End Cap – should be fixed to the wall or end grounds with high grab adhesive or countersunk screws, and a bead of silicone sealant applied to the channel. *(see fig. B)*
- Apply silicone sealant to the channel of the second profile and attach to the first Multipanel™ Tile.
- Apply high grab adhesive to the reverse of the Multipanel™ Tile, angle into the first profile and push firmly against the wall *(see fig.C)*



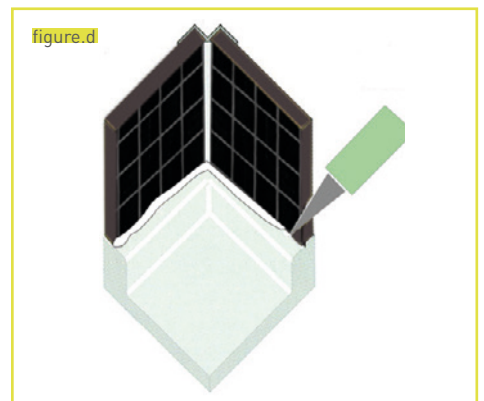
5. Shower trays and baths

Multipanel™ Tile can be fitted with a 3mm gap between the bottom edge of the panel and the shower tray or bath, sealing the gap with silicone sealant *(see fig D.)*



6. Wet areas

In wet areas, Multipanel™ Tile can be set in a Type F capping section, and sealed to the floor finish *(see fig. E.)*



7. Fitting valves and controls

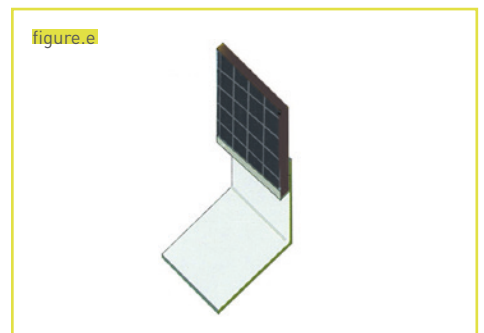
When cutting apertures through, or drilling into Multipanel™ Tile, a 2mm clearance gap should be left around all edges, and sealed with silicone sealant.

8. Adhesives and Sealants

Multipanel™ High Grab Panel Adhesive and Sealant are available to order from your local distributor or show room.

9. Aftercare

Once installed, your Multipanel™ Tile requires minimal maintenance. Multipanel™ Tile should be cleaned with warm water and a non-abrasive mild detergent. Scouring products or similar products should not be used, and doing so may invalidate your warranty.



MULTIPANEL™

WALLS

TILE RANGE

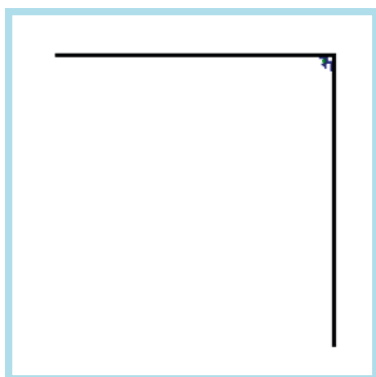


Don't tile it. Multipanel it.

10. Standard installations

Corner Installation Detail

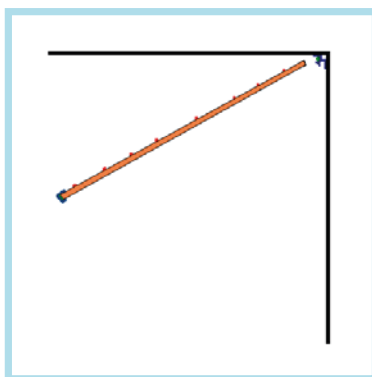
1.



Fit Internal Corner in corner (either glued or screw fixed).

Fill one side of Type A internal corner with bead of silicone ready for panel.

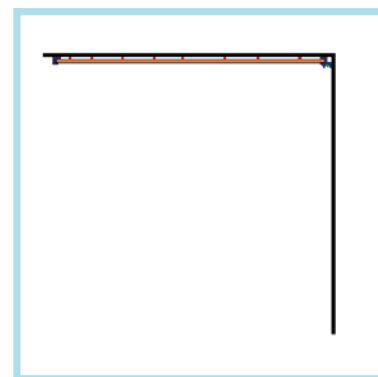
2.



Spread high grab adhesive on back of panel.

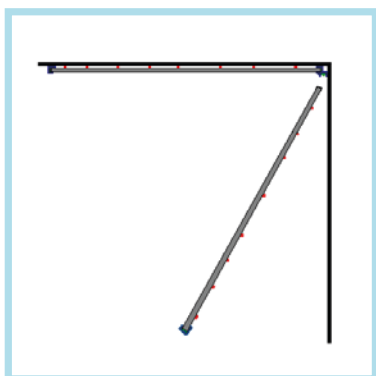
Fit end cap on panel with silicone cleaning excess of decorative face side.

3.



Push panel into internal corner and press against wall firmly, clean any excess silicone from corner.

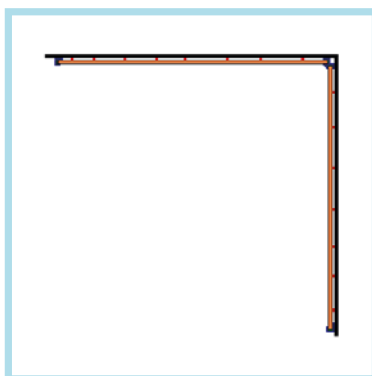
4.



Fill other side of internal corner with silicone ready panel.

Repeat steps 2 & 3

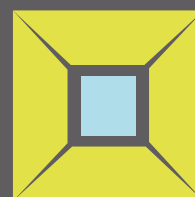
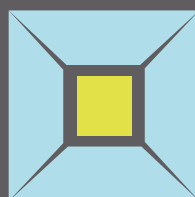
5.



Panels now ready for shower cubicle to be fitted if required.

Please fix through panel into wall behind for secure fixing.

Your Photos Competition



£100 to spend at M&S

For a chance to win **£100** worth of **Marks & Spencer** vouchers upload photos of your new **Multipanel™** product to our Your Photos gallery page on the website. www.multipanel.co.uk

MULTIPANEL™

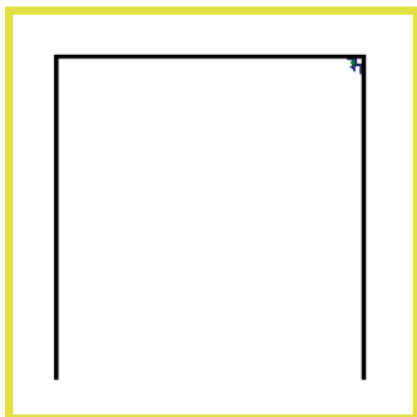
WALLS

TILE RANGE



Recess Installation Detail

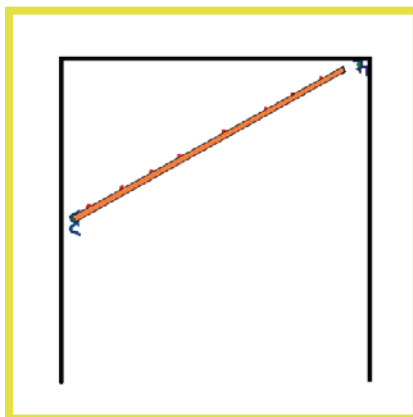
1.



Fit Internal Corner in corner (either glued or screw fixed).

Fill one side of Internal Corner with bead of silicone ready for panel.

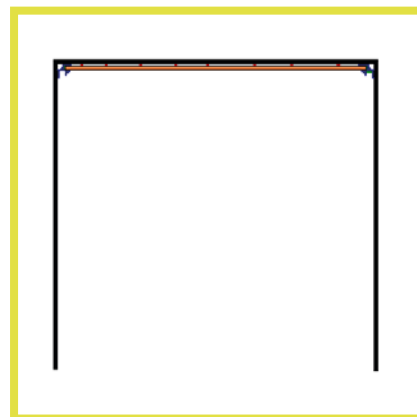
2.



Spread high grab adhesive on back of panel.

Fit Internal Corner on panel with silicone cleaning excess of decorative face side.

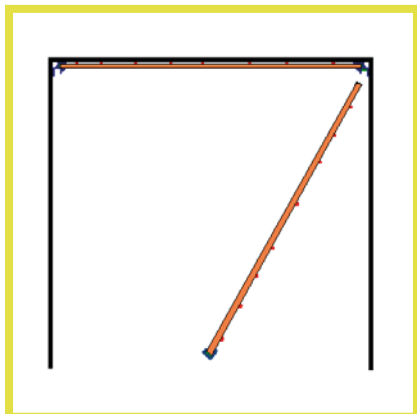
3.



Push panel into Internal Corner and press against wall firmly, clean any excess silicone from corner.

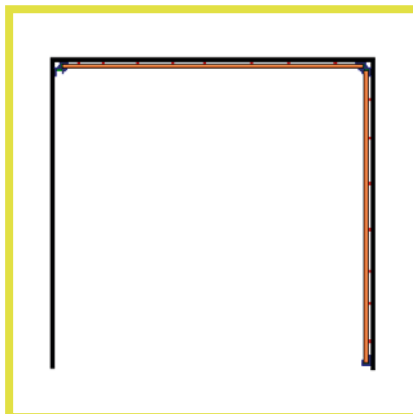
Fill other side of Internal Corner with silicone ready panel.

4.

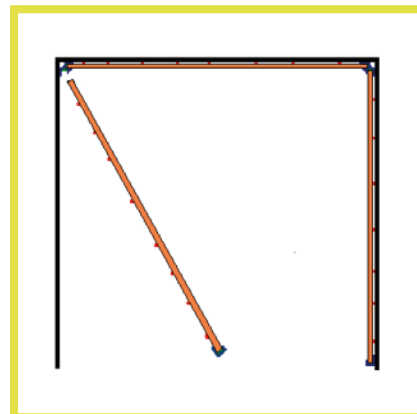


Repeat steps 2 & 3, fitting an end cap if required.

5.

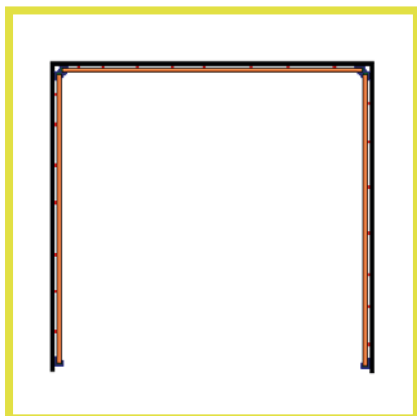


6.



Again repeat steps 2 & 3, fitting an end cap if required.

7.



Panels now ready for cubicle door to be fitted if required.

Please fix through panel into wall behind for secure fixing.

MULTIPANEL™

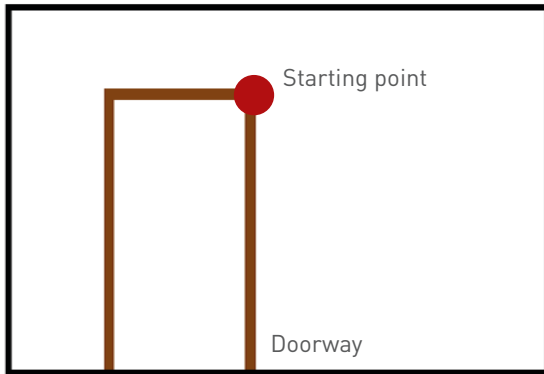
WALLS

TILE RANGE

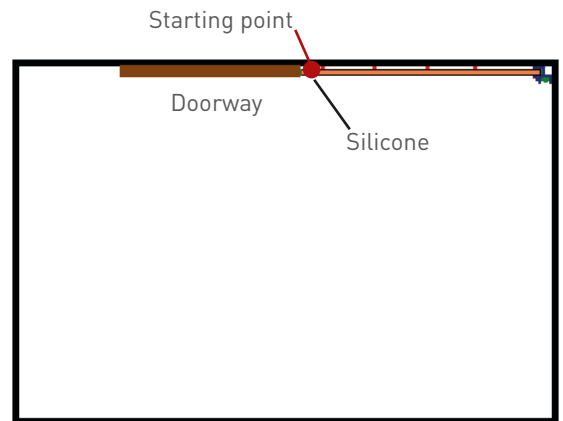


Don't tile it. Multipanel it.

Full Room Installation Detail



1. Starting at the side of the doorway working clockwise away from the doorway.



2. Silicone to top of doorway only then continue round room.



3.



4.



5.



6.

MULTIPANEL™

WALLS

TILE RANGE



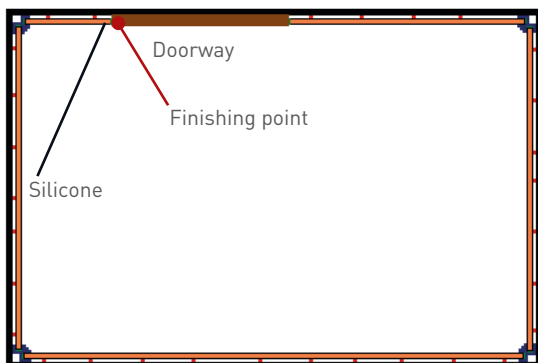
Full Room Installation Detail



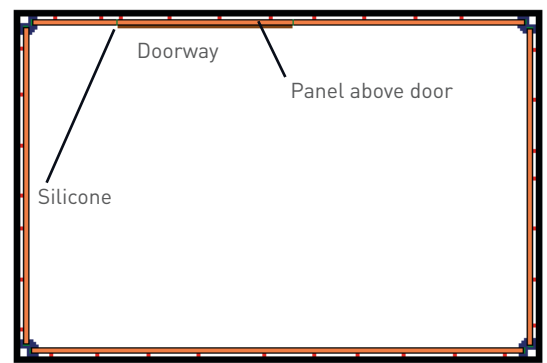
7.



8.



9. Silicone to top of doorway only, then cut panel for above door.



10. Panel above door should be cut accurately. Joints to panels either side should be siliconed.

MULTIPANEL™

WALLS

TILE RANGE



Don't tile it. Multipanel it.

DOMESTIC WARRANTY

Grant Westfield Ltd offers a 10 year warranty that Multipanel™ Tile panels will not crack, blister or delaminate and will remain watertight if fitted and sealed in accordance with our published recommendations.

In the event of a successful claim under your Multipanel™ Tile guarantee we will replace the panels, but will only cover any claims for consequential costs under exceptional circumstances where a defective panel prohibits ordinary use of the surrounding area, eg cannot take a shower.

This guarantee does not cover failure of the product due to:

- Faulty installation
- Incorrect maintenance or storage - panels should not be leaned against walls, or balanced between tressels. If panels have been stored in extremely cold conditions, they should be conditioned at room temperature for 48 hours prior to installation.
- Damage or misuse
- Protective film not being removed from the reverse of Multipanel™ Tile

Prior to installation the following checks should be carried out and any queries reported, as claims of this nature will not be covered:

- Colour matching and sheen levels between all panels and profiles
- Ensure grout lines will align between panels by dry-jointing and trimming to suit.
- If panels are to be fitted by a tradesman - the correct tile size and colour should 1st be approved by the customer
- All products have arrived in good condition
- Flaws or defects in laminate - although unlikely.

This guarantee does not confer any rights other than those set out above and claims for consequential loss or damage are excluded. This guarantee does not affect your statutory rights as a consumer.



MULTIPANEL™

Don't tile it. Multipanel it.

WATERPROOF | WALLS | FLOORS | CEILINGS | VANITIES

Multipanel™, Westfield Avenue, Edinburgh, EH11 2QH

▶ **t** +44(0)131 290 2862

▶ **info@multipanel.co.uk**

▶ **f** +44(0)131 337 9241

▶ **www.multipanel.co.uk**



Multipanel™ is part of the Grant Westfield Group