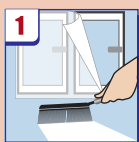


# Sprayed polyurethane insulation POLYNOR®

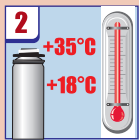


- economical packaging - you buy as much insulation, as it is necessary.
- do not require the installation frame (like mineral wool or polystyrene).
- increased adhesion with most modern building materials.
- resulting surface can be painted.
- high productivity - 1.2 m<sup>2</sup> with thickness of 5 cm.
- surface that is insulated with POLYNOR, will be protected from all known species of mold and mildew.

## Instructions for Use



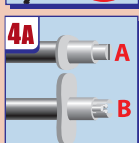
Surrounding objects and surfaces must be protected against accidental contact with sprayed insulation POLYNOR. Work surfaces should be cleaned from dust, dirt, oil stains, and ice. Moisturization is only needed for porous building materials, such as brick, concrete, concrete blocks, plaster, wood. Smooth surfaces, such as metal, glass, etc., do not need to be moisturized.



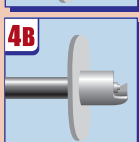
The can should be at room temperature (18-35° C) before work. **ATTENTION! Do not allow can overheating!**



Put a special POLYNOR nozzle (provided) on the gun barrel until it clicks by setting it against a firm surface (wall, floor, etc). You must open the adjusting screw of the gun at maximum flow.



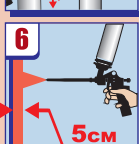
Put on the nozzle in the following manner: "ears" parallel to the ground - "left-to-right" movement; "ears" perpendicular to the ground - "bottom-up" movement. Application to ceiling: run position "ears" - perpendicular to the ground, "pull/push" movement.



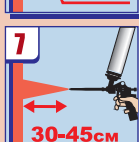
In order to obtain economical and more uniform application of POLYNOR on ceilings, an angular nozzle is recommended (ask your dealer). Run position "ears" perpendicular to the ground, nozzle pointed upwards, "pull/push" movement.



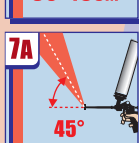
Shake up the can thoroughly. Remove the cap from the ring and screw the gun (not supplied) to the upright standing can.



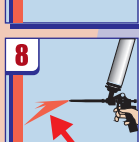
When spraying, you have to push the trigger firmly up to the stop. Thickness of the sprayed layer increases by 20% after 20 minutes. Therefore, do not spray more than 4 cm (4 cm + 20 mins = 5 cm). If you need greater thickness, apply the next layer 20 minutes after application of the first layer. Before that, make sure there are no water droplets on the previous layer. Number of layers is not limited.



Spraying is carried out at the distance of 30 to 45 cm from the surface depending on the formation of the spraying cone. The greater the distance - the wider the sprayed surface.



Spraying with angular nozzle allows to apply POLYNOR on ceiling, without changing can's proper position in space.



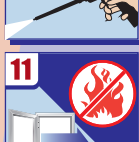
If the spraying cone is being sprayed unevenly, the reason is that the nozzle (gun) was blocked up or thermal regime was disturbed.



While working, can and gun should be periodically shaken.



The gun should be rinsed thoroughly using the "POLYNOR CLEANER" at the end of work.



**IMPORTANT:** Exclude presence of open flames, do not smoke, room should be thoroughly ventilated.



⚠ All work should be carried out with the use of personal protective equipment: gloves, mask, etc.